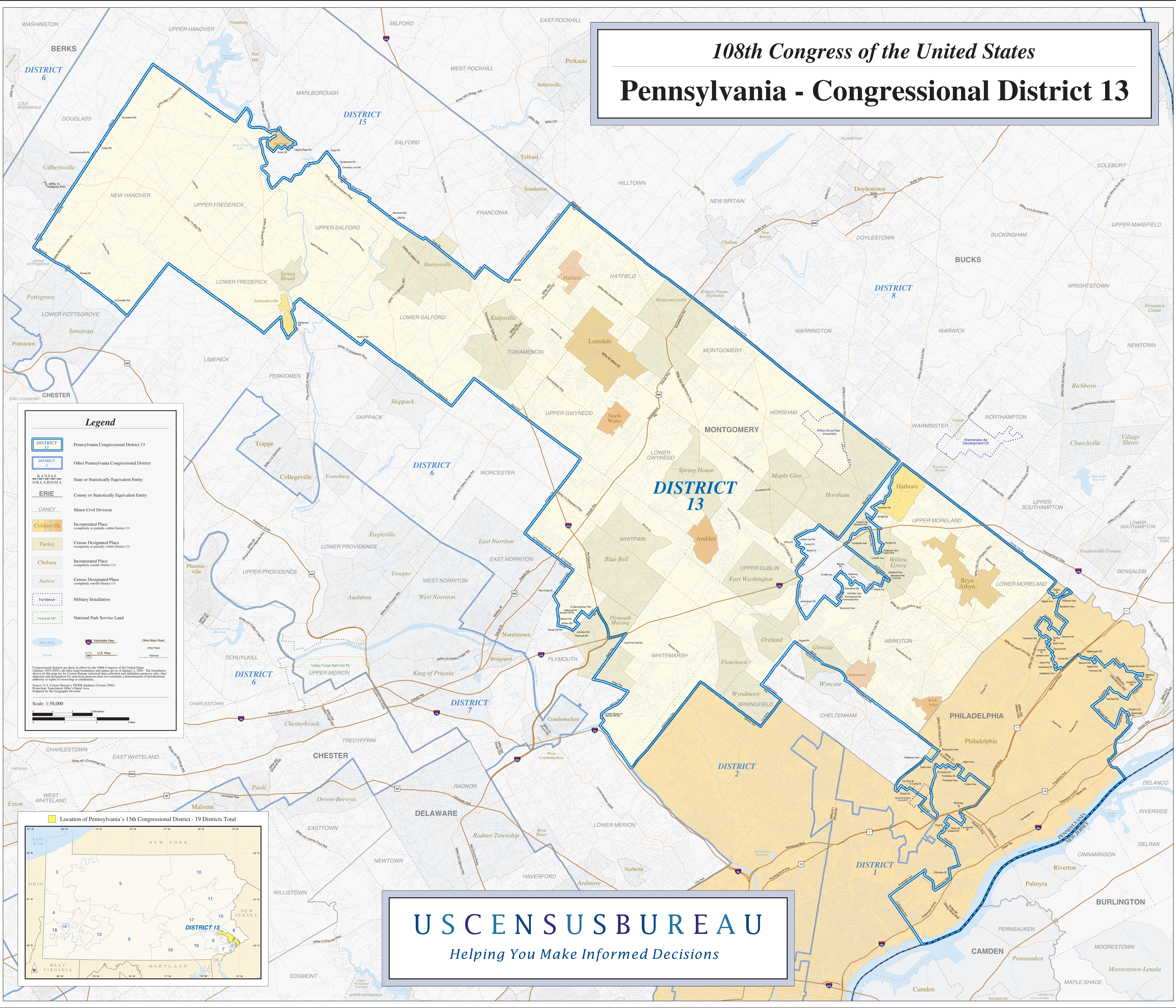


108th Congress of the United States

Pennsylvania - Congressional District 13

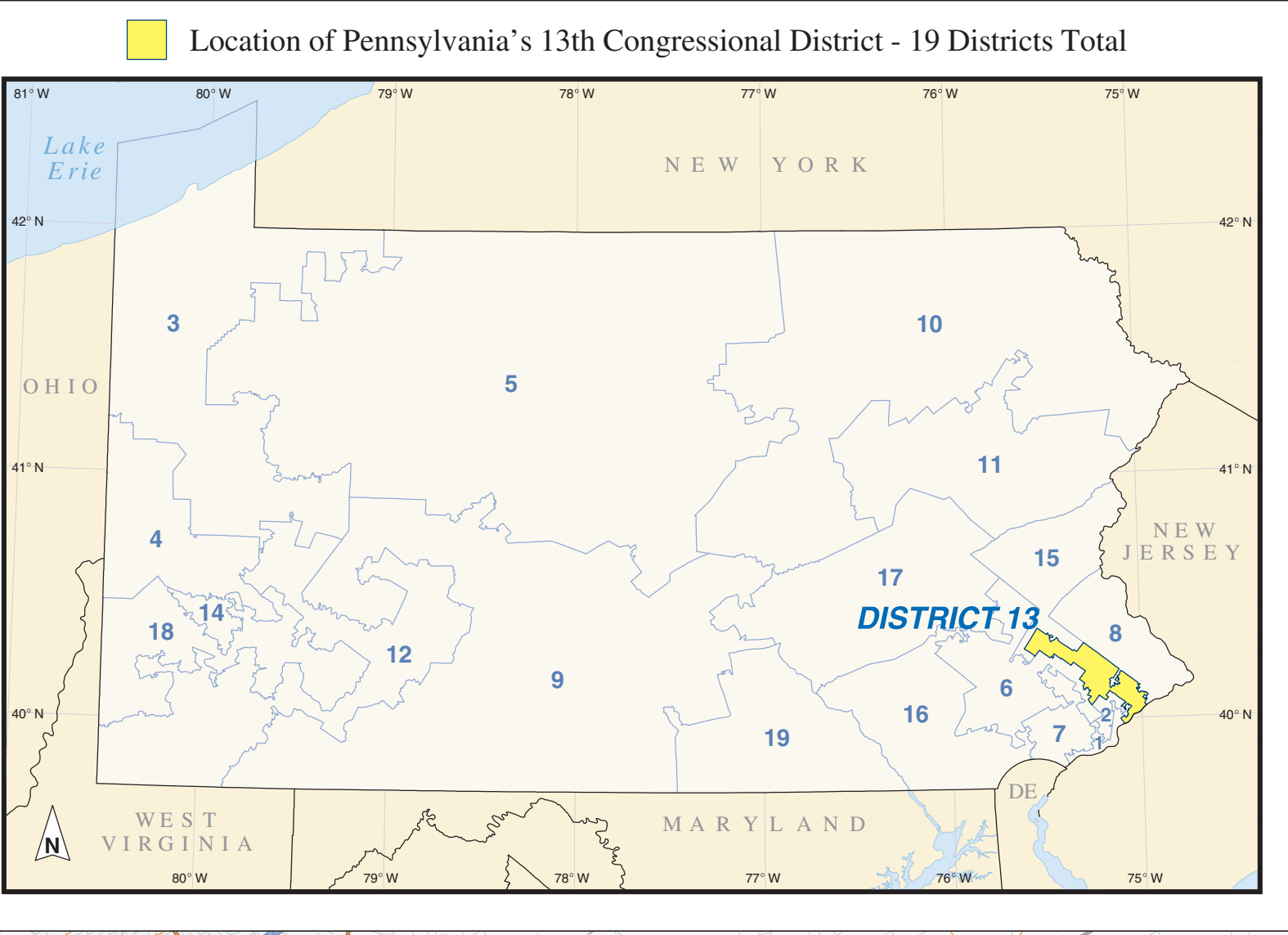


Legend

- DISTRICT 13 Pennsylvania Congressional District 13
- DISTRICT 2 Other Pennsylvania Congressional District
- KANSAS
OKLAHOMA State or Statistically Equivalent Entity
- ERIE County or Statistically Equivalent Entity
- CANBY Minor Civil Division
- Collinsville Incorporated Place (completely or partially within District 13)
- Turley Census Designated Place (completely outside District 13)
- Chelsea Incorporated Place (completely outside District 13)
- Justice Census Designated Place (completely outside District 13)
- Fort Belvoir Military Installation
- Yosemite NP National Park Service Land
- Interstate Hwy Interstate Highway
- U.S. Hwy U.S. Highway
- Other Major Road Other Major Road
- Other Road Other Road
- Railroad Railroad

Congressional districts are those in effect for the 108th Congress of the United States (January 3, 2005) and are based on the 2000 Census. The boundaries shown on this map are for Census Bureau statistical data collection and tabulation purposes only; their accuracy and completeness for non-census purposes does not constitute a determination of jurisdictional authority or rights of ownership or jurisdiction.
Source: U.S. Census Bureau, "IGT2" database (Census 2000)
Projection: State-Plane Albers Equal Area
Prepared by the Geography Division

Scale: 1:58,000



USCENSUSBUREAU
Helping You Make Informed Decisions